

# Belvoir Special School Newsletter



38 Gayview Drive, WODONGA, 3690

Dear Parents/Carers/Friends,

## Athletics Carnival

Congratulations to all of the students who participated in the athletics carnival on Thursday. It was a great day and certainly showed great sportsmanship and how well all of our students can compete and participate in athletic events.

A huge thank you to all of the families who came along to assist and support their students in a range of activities. Thank you, to our PE teacher, Todd, who did all of the organization behind the scenes to ensure that the day ran smoothly. Finally thank you, to all the staff for assisting on the day and allowing as many students as possible to be involved in the activities.

It is hard to believe that the end of Term 1 is in sight. Our final week of term is extremely busy with the Biggest Morning Tea on Tuesday and Wednesday. Tickets are still available from the office. A whole school assembly at 2:10pm. On Thursday we will finish the week with a Hat Parade starting at 9:30 on Thursday, all Belvoir School Community Members are welcome!

## Term One Holidays

A reminder to all parents that our school closes for the Term One holidays on Thursday the 28th of March at 2:00pm. It has certainly been a very busy term and we certainly hope that all families remain safe and healthy. Term 2 starts for students on Tuesday the 16<sup>th</sup> of April. Staff will return on Monday the 15<sup>th</sup> of April for a professional development day. Staff will be focusing on our School Strategic Plan.

## Biggest Morning Tea- 26<sup>th</sup> and 27<sup>th</sup> of March

Our Biggest Morning Tea fundraiser is taking place on Tuesday the 26<sup>th</sup> and Wednesday 27<sup>th</sup> of March. Tickets can be purchased from the office at a cost of \$5, and we encourage families and friends to come along to this event. A plate of food, hot drink and entry to our raffle will be included in the cost. All funds will also be donated to the Cancer Council. We look forward to seeing you at the event.

## Enrolments - 2025 Now Open

Enrolments for 2025 are now open for prospective families. If you know of any family or friends who might be interested in finding out more about Belvoir Special School, encourage them to book a tour, or chat with our administration staff on [\(02\) 6059 8987](tel:0260598987).

## Belvoir is a Sun Smart School

During Term 1 & 4, it is a timely reminder that students and staff be SunSmart. One line of defence against sunburn is the trusty hat. Naturally, we would also like to add, please label your child's hat to minimise the risk of loss property. Appropriate sunglasses approved by the Cancer Council may be worn during recess and lunch breaks, but not in class. They may also be permitted on approved excursions, but remain the responsibility of the students at all times.

*Pennie Moffat*  
Principal

## 2024 DATES TO REMEMBER

**Biggest Morning Tea**  
Tuesday 26th March &  
Wednesday 27th March

**Easter Raffle Drawn**  
Wednesday 27th March

**Crazy Hat Parade**  
Thursday 28th March 9.30am

**Last Day of Term 1**  
Thursday, 28th March, 2.00pm Finish

**First Day of Term 2**  
Tuesday 16th April

## BUS PHONE NUMBERS

**BUS 1:** 0460 869 012

**BUS 2:** 0460 875 492

**BUS 3:** 0460 896 490

**BUS 4:** 0460 935 609

**Belvoir Bus:** 0431 756 813

# CHARITY GALA



TICKETS  
**\$155**  
Per Person

**SATURDAY  
25 MAY**

Tables of 8 or 10  
(Individual Tickets Available)

**INCLUDES:**

Race Day Admission,  
Entertainment, Auctions,  
Two Course Meal, Beer, Wine,  
Cider & Soft Drink for 4 hours.

**PROUDLY SUPPORTING:**



**Belvoir Special School**

**TO PURCHASE TICKETS:**

Please contact Andrew Dear  
on (02) 6059 8987 or by email:  
Andrew.Dear@education.vic.gov.au



[www.racingwodonga.com.au](http://www.racingwodonga.com.au)

# ROOM 4

## newsletter



SWIMMING CARNIVAL

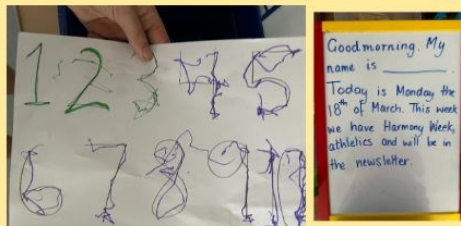


SWIMMING CARNIVAL



### ANGUS

Angus has enjoyed doing his learning both inside and outside of the classroom.



### DECLAN

Declan has enjoys our whole group activities when we each get to showcase our thoughts and ideas.



### HARRISON

Harrison loves being videoed and working 1:1 with adults. He always makes sure he has his sunscreen on each day.



### ISAAC

Isaac loves getting chances to read to room 4 and had proud moments that he loves to send home on Seesaw.



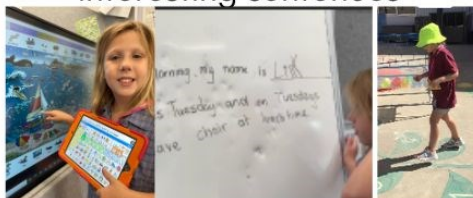
### ARCHER

Archer enjoys his hands on activities. He loves taking photos and videos of what takes place around the room.



### LILLY

Each day we have been using our Oral Language books and a LAMP device to make interesting sentences



### ABEL

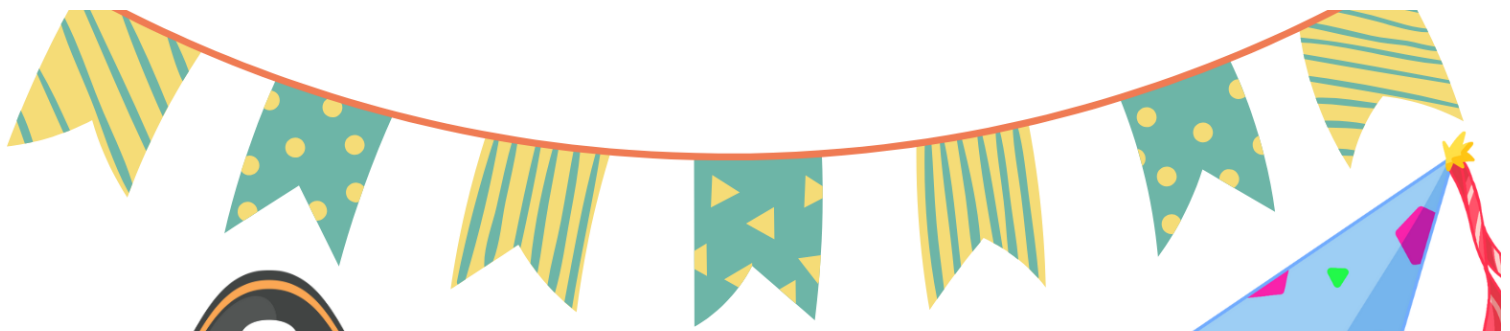
Abel has been working hard on his letters and name activities. He loves getting a chance to draw and write.



### ULARNA

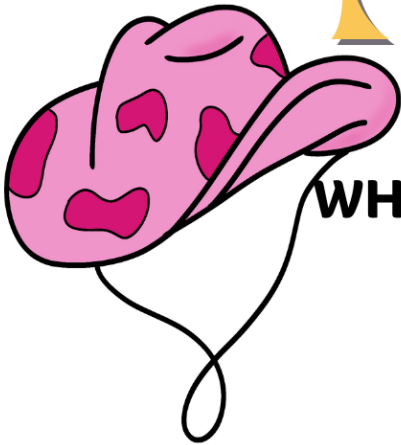
Ularua enjoys working with others and by herself. She is always ready to help adults with tasks around the room.





YOU'RE INVITED TO

**BELVOIR'S  
CRAZY  
HAT  
PARADE**



**WHEN: Thursday, 28 March 2024**

**at 9:30 - 10:00**

**WHERE: Central agora**

Parents, carers, special people of our students are welcome to come and watch the fun!

Students will have an opportunity to make a paper hat at school, or they are welcome to bring a hat made at home.

# BELVOIR EASTER RAFFLE 2024

## WE NEED YOUR HELP!

It's that time of the year again when we ask our families to help us raise funds for the school by supporting our Annual Easter Raffle!

**We are asking for donations of eggs, rabbits and baskets so that they can be made into wonderful and colourful raffle prizes.**

If you are unsure about what to donate, please contact the office and Andrea, Jo or Viv will be able to suggest some ideas.

### **Tickets have been sent home.**

Tickets are \$1.00 each. Could you please return sold tickets and money to the office by Monday 25th March, 2024. If you require more tickets, please contact the office.

Prizes will be drawn on Wednesday 27th March, 2024 and winners will be notified by phone. Thank you for your support!



# Belvoir's Biggest

# Morning Tea!

**When:** Tuesday 26<sup>th</sup> and Wednesday 27<sup>th</sup> March 2024

**Time:** 11:00am- 12:30pm

**Venue:** Belvoir Special School Hall

**Cost:** \$5.00 (purchased from the Belvoir Special School front office)

Tickets purchased will enter a raffle to be drawn at the end of the day.





# ROOM 10 NEWS

Sara, Lara, Christin & Cheryl

## Adventures and Activities in Room 10



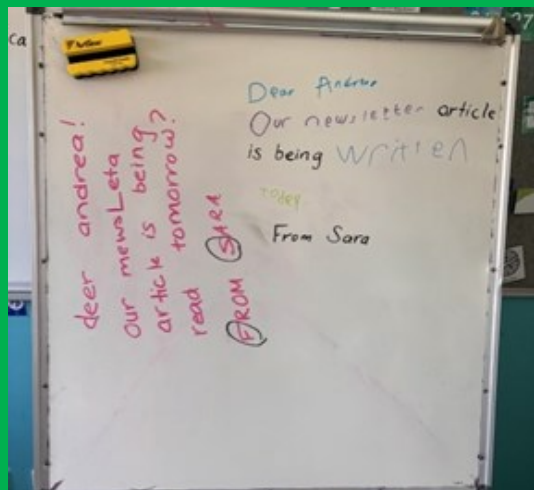
In the Jungle sensory incursion experience



### How The Birds Got their Colours

Interactive experience using bread, painting it with paint brushes and food dye, and using coloured sprinkles.

Room 10 at the Swimming Carnival. Safe to say, they all had an absolute ball.



As part of our English focus, we have been learning about how to structure and edit text. We have been using our morning message to help us. Sara and Lara have been creating silly messages with lots of mistakes for us edit.



FoodShare's Community Pantry service supports members of the community experiencing financial hardship by providing:

- fresh fruit and vegetables
- protein and dairy products
- pantry staples/ household items/ frozen

How to access the supermarket:

If you or your family are struggling to put food on the table but you have funds available to cover the cost of a voucher, the agencies listed below are facilitating access to FoodShare vouchers.

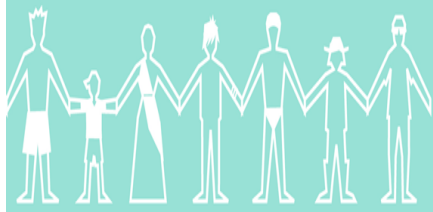
1. You will need to buy a \$25 or a \$15 voucher from one of the below locations 2. Take the voucher to redeem it for food and supplies at 81 Wigg Street—FoodShare supermarket.

Vouchers are available from:

- The Personnel Group- 02 6041 1577
- Hyphen - Wodonga Library Gallery
- Vincent de Paul - Wodonga- 02 6024 3493 and leave a message for a call back
- VACCA— 03 5756 9000







# HARMONY WEEK

EVERYONE BELONGS

HARMONY.GOV.AU

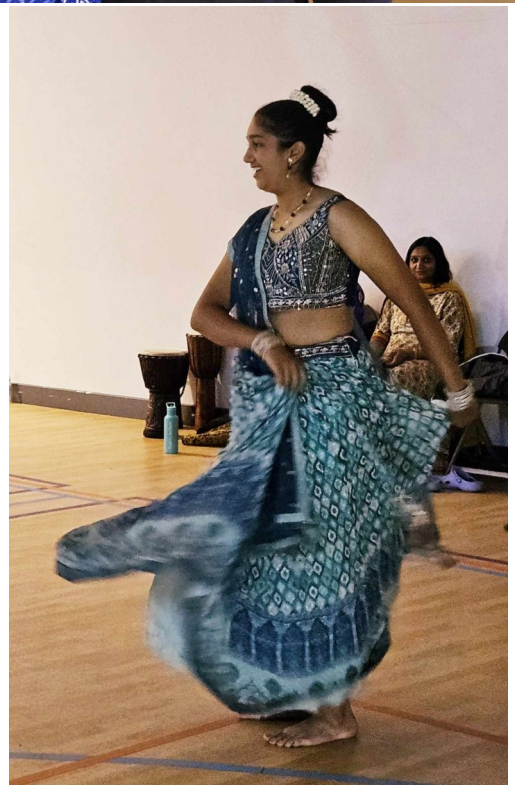


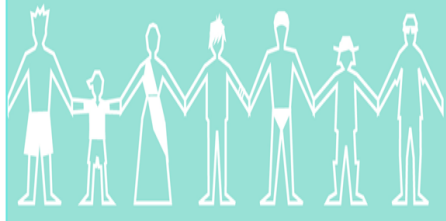
## HARMONY WEEK: 18th—24th of March

Harmony Week is about inclusiveness, respect and a sense of belonging for everyone. It's a time to reflect on the importance of respecting each other and our differences. The message of Harmony Week is "EVERYONE BELONGS". Across this past week our whole school has participated in a number of interactive activities to celebrate Harmony Week and learn more about the importance of cultural diversity and inclusion within our school community

On Monday we kicked off our celebrations with a Cultural Music/Dance Incursion. During this incursion students and staff were able to participate in a performance from a number of special guests inclusive of African drumming, Bollywood and Fijian dance.

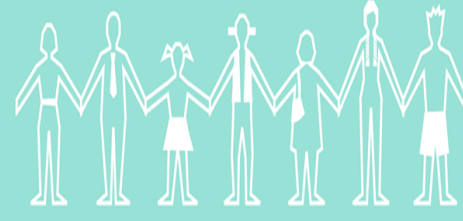
We would like to extend our sincere thanks to our performers Felix, Semiti and Gracie for sharing your talent and culture with our school. Also we would like to acknowledge the Albury Wodonga Ethnic Communities Council for partnering with us to make this special event happen.





# HARMONY WEEK

EVERYONE BELONGS • HARMONY.GOV.AU



## HARMONY WEEK: 18th—24th of March

On Tuesday, a significant number of our students and staff were dressed in orange or something of cultural significance. It was wonderful to celebrate the cultural diversity of our school community and learn from each other.

During our afternoon staff meeting we had the privilege of having Nelson (Cultural Liaison Wodonga Senior Secondary School) share with our staff a bit about his own experience as a member of the refugee community resettling in Wodonga, his current role at WSSC and the importance of having adequate cultural supports in education settings to promote positive engagement, inclusion and belonging for all.





## **HARMONY WEEK: 18th—24th of March**

Within our classroom's and specialist classes our students were able to further extend on their learning around Harmony Week and engage in activities to explore different cultures and support a sense of belonging within our school community.





## School Expectations



• Follow Instructions



• Be Safe



• Be Respectful

Developed by SPED Unit under the leadership of Belvoir School  
Approved by Belvoir School Staff - 2019/2020, 2020/2021, 2021/2022, 2022/2023, 2023/2024

## TERM DATES 2024

	START	FINISH
<b>Term 1</b>	<b>29/01/2024</b>	<b>28/03/2024</b>
<b>Term 2</b>	<b>15/04/2024</b>	<b>28/06/2024</b>
<b>Term 3</b>	<b>15/07/2024</b>	<b>20/09/2024</b>
<b>Term 4</b>	<b>07/10/2024</b>	<b>20/12/2024</b>

Please note that school finishes at 2.00pm last day of the term except for Term 4.

## Parental Concerns or Issues

Belvoir Special School welcomes feedback, both positive and negative, and is committed to continuous improvement. We value open communication with our families and are committed to understanding complaints and addressing them appropriately. We recognise that the complaints process provides an important opportunity for reflection and learning.

We encourage and value open positive relationships with our school community and understand that it is in the best interests of students for there to be a trusting relationship between families and our school.

Parents are able to contact the school through the student diaries which are sent home with students each day, or they can ring the school to speak with classroom staff before or after school most days.

If the matter is urgent parents are able to email [belvoir.wodonga.sds@education.vic.gov.au](mailto:belvoir.wodonga.sds@education.vic.gov.au) or call the school on 02 6059 8987 and speak with or organize a time to discuss the issue with either Michelle Heintze-Moller, myself or relevant staff.

Our full complaints and other policies can be found at:

[Policies and Forms - Belvoir Special Development School \(belvoirss.vic.edu.au\)](http://belvoirss.vic.edu.au)

Pennie Moffat  
Principal

## School Athletics - House Groups

Students, Staff and Parents are put into groups according to their surnames. Each group has a name and color and it's requested that everyone wears clothing the color of the house they are allocated to:

<u>Surnames between</u>	=	<u>Colour</u>	<u>House Name</u>
<b>A-D</b>	=	<b>Red</b>	<b>Mitta</b>
<b>E-K</b>	=	<b>Green</b>	<b>Murray</b>
<b>L-Q</b>	=	<b>Blue</b>	<b>Kiewa</b>
<b>R-Z</b>	=	<b>Yellow</b>	<b>Hume</b>

# PERFORMING ARTS NEWS

## In The Jungle



Last week, I had the absolute joy and privilege of performing “In The Jungle” at Belvoir. Specifically written and developed for students who have the highest physical, cognitive, and sensory support needs. Select students were taken on a magical sensory journey through a jungle landscape. We explored and touched the flora and fauna of the jungle, paddled and played in the “river”, and watched the stars. Belvoir and I would like to thank the Rotary Club of Albury for the incredibly generous financial support of this incursion, and Alyce Fisher who assisted with the development of the set, characters, and performed alongside me.





The Department of Transport & Planning [Travel Pass program](#) provides free 30-day Travel Passes to Victorian students who are experiencing crisis to ensure they can continue to attend school by using public transport.

The program was recently expanded to include caregivers of eligible students, ensuring that they can accompany a student on their journey. Students' eligibility is determined on a case-by-case basis by the school and the passes can be used across Victoria's public transport network.

### **Travel Passes**

Primary, secondary and specialist schools can receive 30-day Travel Passes free of charge to give to students in crisis.

Travel Passes can be used on:

- bus, train and tram trips in metropolitan Melbourne (Zone 1 and 2)
- all regional town buses
- PTV inter-town buses
- V/Line coaches
- V/Line trains.

### **How to apply**

Students can apply directly to their school.

Government schools can apply on behalf of students via their State Schools' Relief online portal.

## **COLLECTION OF STUDENTS AT THE END OF EACH DAY**

The front of our school gets very busy at the end of the day. To help our bus travellers get to the buses quickly and with limited disruptions we kindly ask that families, carers and support workers please wait outside the school until after the bell or 3pm.

Suitable places to wait include:

- In your car
- Opposite the front gate in the garden
- Along the rear wall of the hall.

We want our bus travellers to have a smooth transition to the buses and know that when there are too many people waiting at the front of the school our students can become overwhelmed.

Your support is going to help everyone have a positive end to their school day.



Bringing sport, joy and inclusion to  
people with intellectual disability/autism

Your local Special Olympics  
Club is **Ovens & Murray** – part  
of Special Olympics Victoria &  
Special Olympics Australia



Weekly sports training in Albury &  
Wodonga for people with an intellectual disability or autism

Sports offered: Swimming, Basketball, Athletics, Bocce, Gymnastics,  
Power Lifting Ten Pin Bowling and now TABLE TENNIS!

**Come and Try Table Tennis every Thursday 5pm - 6pm**

**Venue :** Salvos Community Centre corner Corella & Union Road  
in Lavington (near the 5 ways)

**Cost :** FREE

Table Tennis Coordinator is Judith McKeown 0402043730  
General Enquiries or for other sports 0474784700  
Facebook <https://www.facebook.com/Ovensandmurray>



# SCHOOL POLICIES

## UNIFORM AND APPEARANCE

School's compulsory school uniform items are as follows:

### **Junior and Middle year students' uniform**

Navy shorts (knee length or just above)

Navy track pants in Term 2 and 3 and cooler weather.

Burgundy polo shirt with collar.

Burgundy windcheater or button front fleecy jacket available from uniform shop.

A checked dress, with bike shorts beneath, which is the same across the school.

Broad-brimmed navy sunhat for Term 1 and 4.

Black leather school shoes or supportive pair of runners. Sandals with an enclosed heel and toe may be worn in hot weather.

### **Senior Students:**

Navy shorts (knee length or just above knee) or knee length navy skirt if preferred.

Navy track pants or trousers in Term 2 and 3 and cooler weather.

Navy polo shirt with collar.

Navy jumper.

Broad-brimmed navy sunhat for Term 1 and 4.

## ATTENDANCE POLICY

Schooling is compulsory for children and young people aged from 6 to 17 years (unless an exemption from attendance or enrolment has been granted).

Daily attendance is important for all children and young people to succeed in education and to ensure they do not fall behind both socially and developmentally. School participation maximises life opportunities for children and young people by providing them with education and support networks. School helps people to develop important skills, knowledge and values that set them up for further learning and participation in their community.

**Students are expected to attend Belvoir Special School during normal school hours every day of each term unless:**

- there is an approved exemption from school attendance for the student.
- the student has a dual enrolment with another school and has only a partial enrolment in Belvoir Special School, or
- the student is registered for home schooling and has only a partial enrolment in Belvoir Special School for particular activities.

Both schools and parents have an important role to play in supporting students to attend school every day.

Belvoir Special School believes all students should attend school all day, every day when the school is open for instruction and is committed to working with its school community to encourage and support full school attendance.

## PERSONAL PROPERTY

REMINDER – the Department (which includes our school) does not have accident insurance.

Items of personal property that are lost, stolen or damaged at school are not the responsibility of Belvoir Special School or the Department. Staff and students are reminded not to bring items of value to school.





# ROOM 16 NEWS

Nina, Katrina & Heidi



What a busy term! Last week, room 16 welcomed a new student, who is fitting in amazingly. We have been hard at work editing and polishing our recounts in writing and analysing different text types in reading.

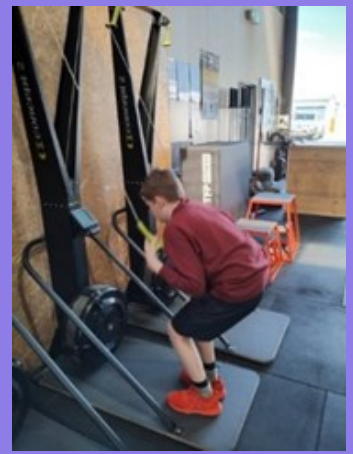
We have just finished our second mathematics topic for the term: data.

We were able to apply this new skill to real world situations and conduct surveys about our recent swimming carnival. Our new topic is patterns, and the students are having fun dancing, painting, counting, and threading repeated patterns.

We have also enjoyed some wonderful incursions and excursions, including the Harmony Day cultural demonstrations, a workout at Crossfit, and a busy day at the athletics carnival.

The room 16 students are also developing their self-awareness in our term topic “headspace.” We have been investigating sensory and social activities that can cheer us up or calm us down.

Well done for a great first term room 16!



# Download our school app for free!



- Instant news notifications
- Online absentee forms
- Events and reminders



## Download instructions:

1. Go to the App Store and download "School Stream" to your phone.

2. Open the app and type the school's name into the search bar to load the school's profile.

3. Make sure you agree to Push Notifications when prompted.



# OFF-GRID LIVING

FESTIVAL & CAMP OUT

APRIL 6 & 7th 2024

CHILTERN - VICTORIA - AUSTRALIA

GATES OPEN - 9AM - 5PM

## Come Along and Be Inspired!

by a huge array of unique exhibitors, talk stages, workshops and people from all walks of life who are passionate about

### Sustainable Living and Life Off-Grid!

The Off-Grid Living Festival (founded in 2018) has quickly grown to become one of the best-known sustainability events in Australia.

It has grown bigger and better each year whilst still maintaining it's original grassroots vibe.

It's an amazing weekend in NE Victoria for all to enjoy!

Check out our website:

<https://www.offgridevent.com.au/>

and get your tickets online at:

<https://www.trybooking.com/events/landing/1143200>

For more information contact Bart on: 0419 390329

Border Regional Electrification Events Inc.  
Supporting the Off-Grid Living Festival

